

Product information sheet ZEROX 400/400-IF

Item no. 521619

Benefits



- Zero-radius design with striking, right-angled bowl geometry
- Wide product range enables a plethora of bespoke combinations
- Flush IF - flat rim
- InFino drain system – elegantly integrated and easy-care
- Easy to combine, optimal accessory solutions

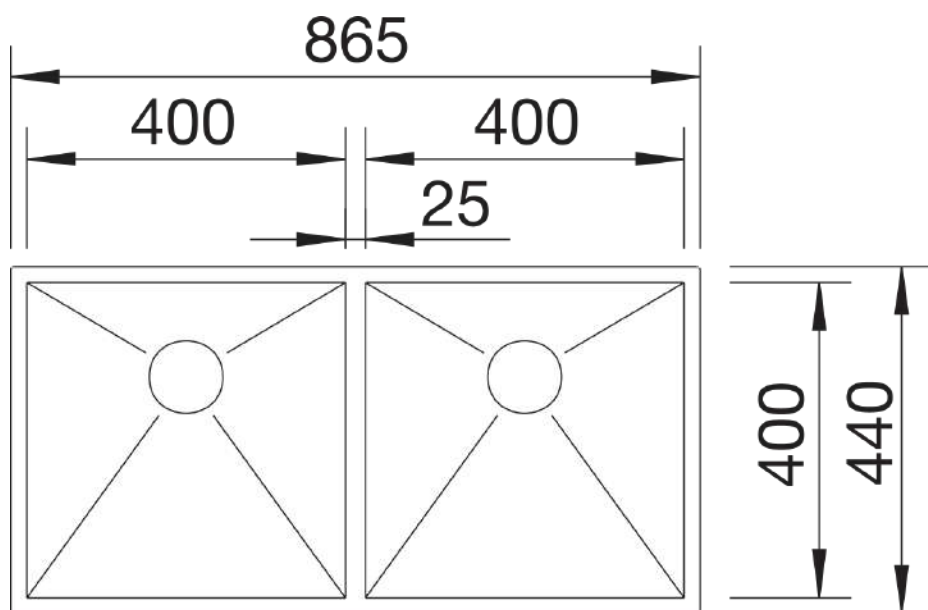
Planning information

- Note: also available as an undermount version.
- * Scope of supply note:
- a retrofit set is required for IF models without a tap ledge if using a drain remote control with pop-up.
- Recommended: item no. 232 459
- Installing a kitchen mixer tap, drain remote control or soap dispenser in laminate worktops requires a flexible sealing tape, item no. 120 055.

Scope of supply

- waste kit* with space saving pipe
- waste connection
- 2 x 3 ½" InFino basket strainer
- fixing kit

Details



Top view

Product information sheet ZEROX 700-IF/A

Item no. 521631

Benefits



- Zero-radius design with striking, right-angled bowl geometry
- Flush IF - flat rim
- Unique stability of the mixer tap due to the extensive stabilising technology
- InFino drain system with PushControl - the slim and intuitive remote control
- Wide product programme of exclusive inset bowls

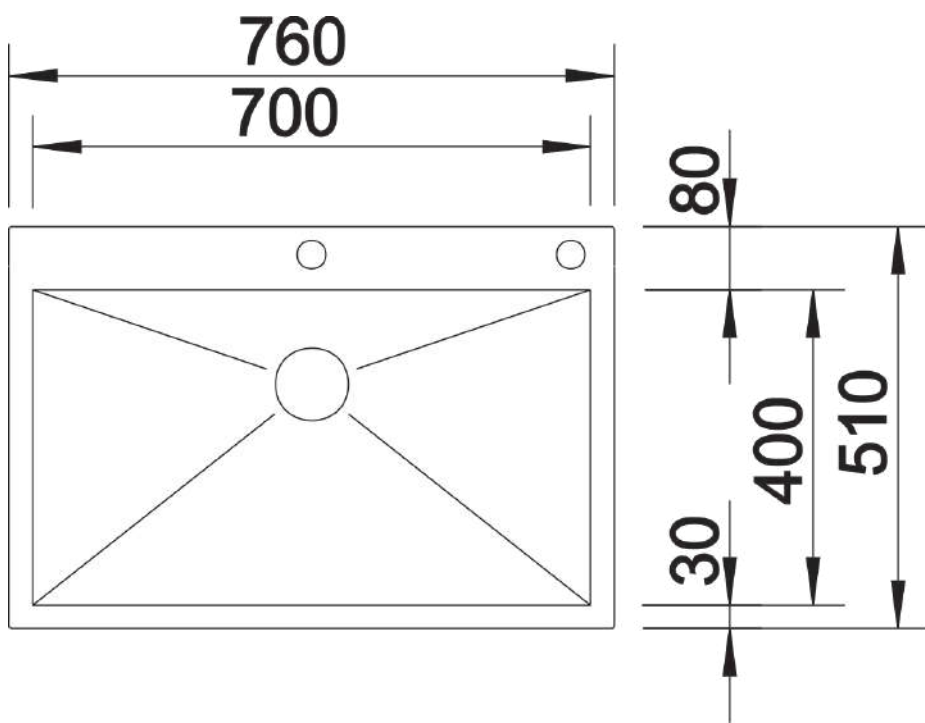
Planning information

- Special drill holes:
- all IF models with a tap ledge can be configured with individually positioned drill holes for an additional fee.

Scope of supply

- waste kit with space saving pipe
- 3 ½" InFino basket strainer with drain remote control (PushControl)
- fixing kit

Details



Top view

Product information sheet ZEROX 550-IF/A

Item no. 521638

Benefits



- Zero-radius design with striking, right-angled bowl geometry
- Flush IF - flat rim
- Unique stability of the mixer tap due to the extensive stabilising technology
- InFino drain system with PushControl - the slim and intuitive remote control
- Wide product programme of exclusive inset bowls

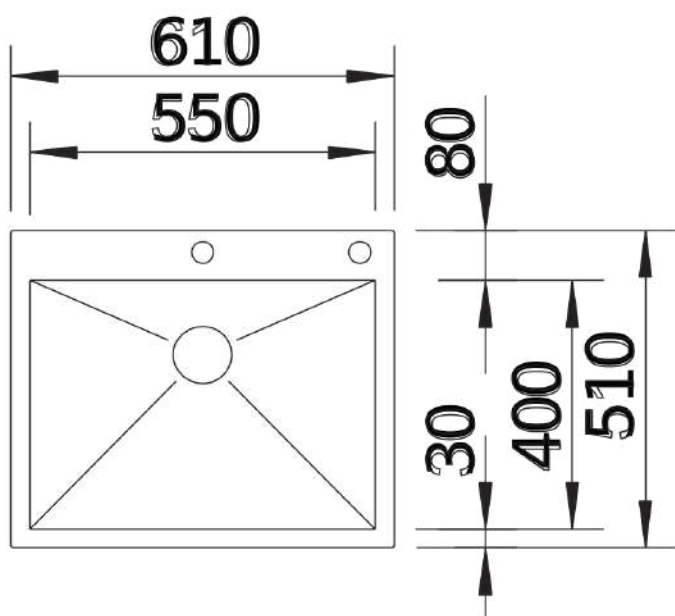
Planning information

- Special drill holes:
- all IF models with a tap ledge can be configured with individually positioned drill holes for an additional fee.

Scope of supply

- waste kit with space-saving pipe
- 3 ½" InFino basket strainer with drain remote control (PushControl)
- fixing kit

Details



Top view

Product information sheet ZEROX 400/400-U

Item no. 521620

Benefits



- Zero-radius design with striking, right-angled bowl geometry
- Wide product range enables a plethora of bespoke combinations
- InFino drain system – elegantly integrated and easy-care
- Easy to combine, optimal accessory solutions

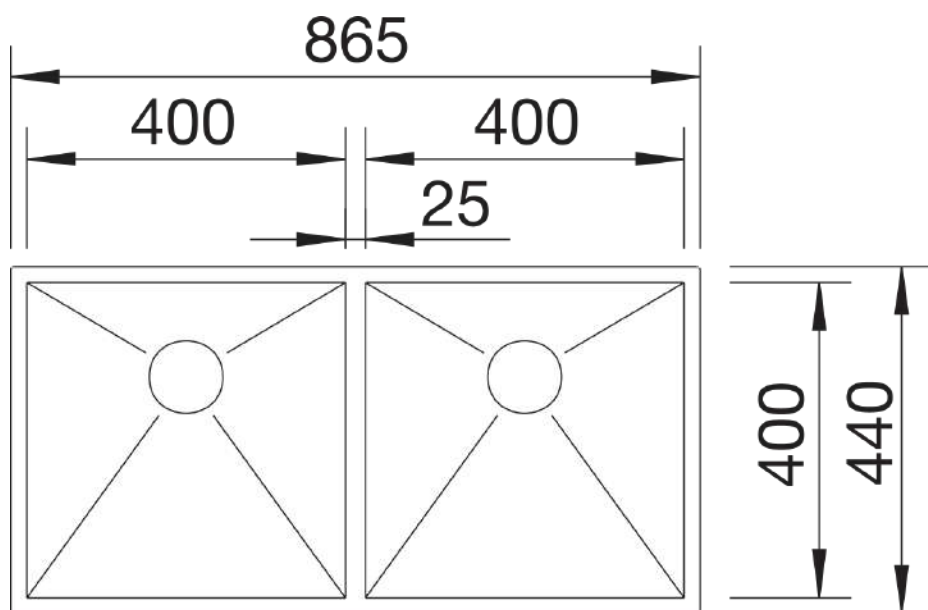
Planning information

- Note: also available as a flushmount version.
- * Scope of supply note:
- a retrofit set is required for undermount models without a tap ledge if using a drain remote control with pop-up.
- Recommended: item no. 232 459
- Installing a kitchen mixer tap, drain remote control or soap dispenser in laminate worktops requires a flexible sealing tape, item no. 120 055.

Scope of supply

- waste kit* with space saving pipe
- waste connection
- 2 x 3 ½" InFino basket strainer
- fixing kit

Details



Top view

Product information sheet ZEROX 700-U

Item no. 521593

Benefits



- Zero-radius design with striking, right-angled bowl geometry
- Wide product range enables a plethora of bespoke combinations
- InFino drain system – elegantly integrated and easy-care
- Easy to combine, optimal accessory solutions

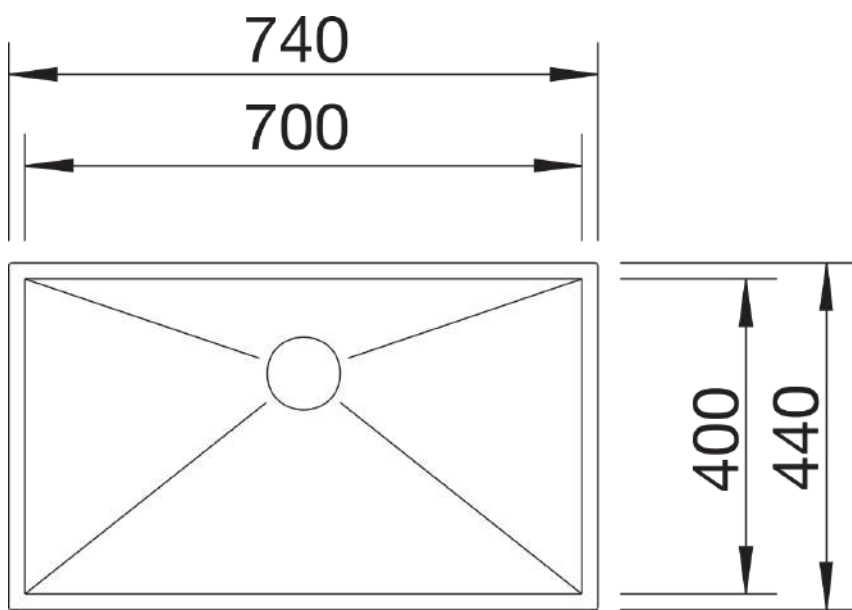
Planning information

- Note: also available as a flushmount version.
- * Scope of supply note:
- a retrofit set is required for undermount models without a tap ledge if using a drain remote control with pop-up.
- Recommended: item no. 232 459
- Installing a kitchen mixer tap, drain remote control or soap dispenser in laminate worktops requires a flexible sealing tape, item no. 120 055.

Scope of supply

- waste kit* with space saving pipe
- 3 ½" InFino basket strainer
- fixing kit

Details



Top view

Product information sheet ZEROX 550-U

Item no. 521591

Benefits



- Zero-radius design with striking, right-angled bowl geometry
- Wide product range enables a plethora of bespoke combinations
- InFino drain system – elegantly integrated and easy-care
- Easy to combine, optimal accessory solutions

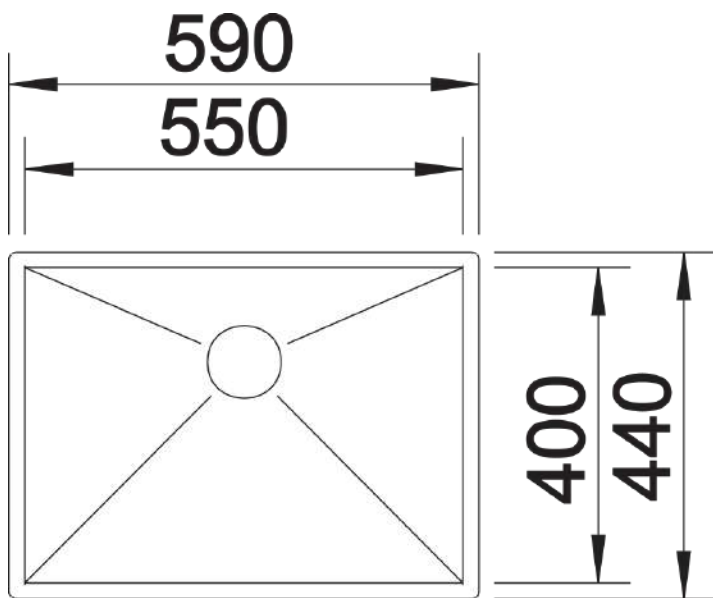
Planning information

- Note: also available as a flushmount version.
- * Scope of supply note:
- a retrofit set is required for undermount models without a tap ledge if using a drain remote control with pop-up.
- Recommended: item no. 232 459
- Installing a kitchen mixer tap, drain remote control or soap dispenser in laminate worktops requires a flexible sealing tape, item no. 120 055.

Scope of supply

- waste kit* with space saving pipe
- 3 ½" InFino basket strainer
- fixing kit

Details



Top view