

## TECE data sheet

Status as of 07.09.2018



### TECEconstruct toilet module with Octa cistern, 8 cm, installation height 1200 mm

Article number: 9300040

DU 1: 1 pc.

DU 2: 14 pc.

#### Description:

Toilet module to install in metal or wooden post-and-beam walls and as pre-wall or corner module; also suitable for single block assembly.

Completely pre-assembled unit, consisting of:

Octa cistern, 8 cm, for front actuation:

- Safety tank made of impact-resistant plastic
- Cistern completely pre-assembled and sealed
- Pre-assembled corner valve and cistern connection, cistern connection with 1/2" inner thread
- 9.5-litre tank volume; 6-litre pre-set standard flush volume; 4.5/6/9-litre flush volume setting option at any time; 3-litre partial flush volume with dual-flush system. Remaining volume can be used for immediate cleaning flush
- Certified in accordance with DIN EN 14055
- Insulated against condensation water
- For TECE flush plates and toilet flush handle
- Can be set as a single or dual-flush cistern depending on the flush plate used
- Low-noise hydraulic filling valve

Module consisting of:

- Self-supporting installation frame, powder-coated
- 180 or 230 mm ceramic mounting distance
- Drain bend DN 90/90
- Toilet connection set DN 90
- Attachment for pre-wall assembly (see 9380007)

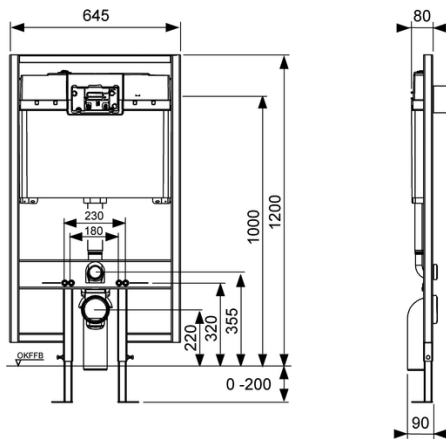
# TECE data sheet

Status as of 07.09.2018

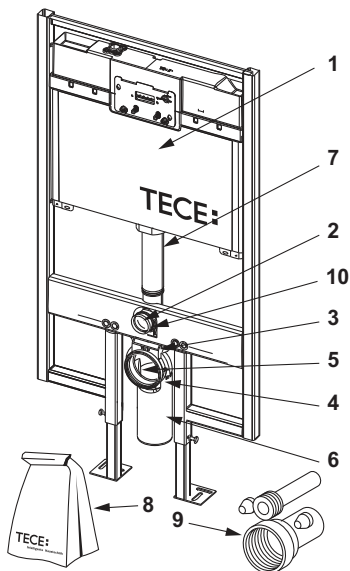
## Sales data:

Shorttext 1: TECEconstruct toilet mod. with  
Shorttext 2: Octa cistern, 8 cm, ins. height 1200 mm  
Commodity group: 905  
Product group: 2009050010  
Discount group: 3

## Dimensional drawings:



## Spare parts:



- |    |         |  |
|----|---------|--|
| 1  | 9820250 | Octa cistern, 8 cm   |
| 2  | 9820015 | Flush pipe seal  |
| 3  | 9820145 | Toilet drain bend holder for dry-wall modules, clip-bar                      |
| 4  | 9820049 | Bracket toilet drain bend holder   |
| 5  | 9820139 | Seal for toilet drain bend/adaptor   |
| 6  | 9820150 | Toilet drain bend holder DN 90/90 PE-HD, for cisterns 8 cm                   |
| 7  | 9820192 | Flush pipe with O-ring   |
| 8  | 9820147 | By-pack for toilet module with 8 cm cistern (mounting material, etc.)        |
| 9  | 9820057 | Connection set DN 90 for toilet  |
| 10 | 9820254 | Flush pipe holder for toilets, fits for standard as well as for 8 cm modules |